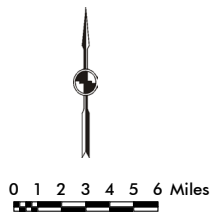
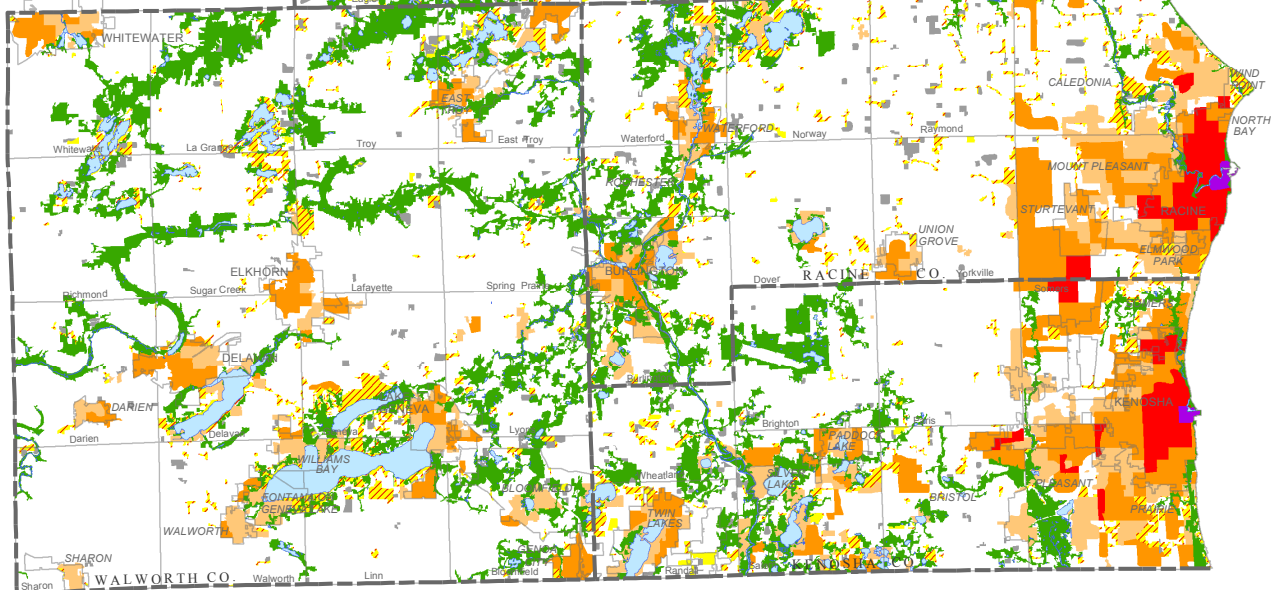


VISION 2050 Land Use Development Pattern

- MIXED-USE CITY CENTER**
(Residential and Other Urban Land—At Least
18.0 Dwelling Units per Net Residential Acre)
- MIXED-USE TRADITIONAL NEIGHBORHOOD**
(Residential and Other Urban Land—At Least
7.0 to 17.9 Dwelling Units per Net Residential Acre)
- SMALL LOT TRADITIONAL NEIGHBORHOOD**
(Residential and Other Urban Land—At Least
4.4 to 6.9 Dwelling Units per Net Residential Acre)
- MEDIUM LOT NEIGHBORHOOD**
(Residential and Other Urban Land—At Least
2.3 to 4.3 Dwelling Units per Net Residential Acre)
- LARGE LOT NEIGHBORHOOD**
(Residential and Other Urban Land—At Least
0.7 to 2.2 Dwelling Units per Net Residential Acre)
- LARGE LOT EXURBAN**
(Residential Land—
0.2 to 0.6 Dwelling Units per Net Residential Acre)
- RURAL ESTATE**
(0.1 to 0.2 Dwelling Units per Acre)
- AGRICULTURAL AND OTHER
OPEN LANDS**
- PRIMARY ENVIRONMENTAL
CORRIDOR**
- SURFACE WATER**

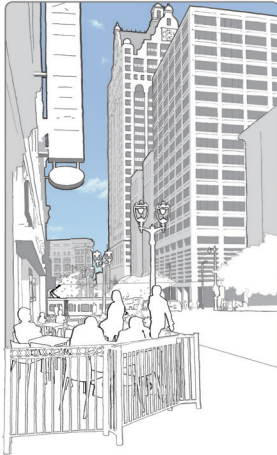


Source: SEWRPC



VISION 2050 Land Use Categories

The recommended VISION 2050 land use pattern was developed by allocating new households and employment envisioned for the Region under the Commission's year 2050 growth projections to a series of seven land use categories that represent a variety of development densities and mixes of uses.



MIXED-USE CITY CENTER

Mix of very high density offices, businesses, and housing found in the most densely populated areas of the Region



MIXED-USE TRADITIONAL NEIGHBORHOOD

Mix of high-density housing, businesses, and offices found in densely populated areas



SMALL LOT TRADITIONAL NEIGHBORHOOD (showing lots of about 7,000 square feet)

Mix of housing types and businesses with single-family homes on lots of 1/4-acre or less and multifamily housing found within and at the edges of cities and villages



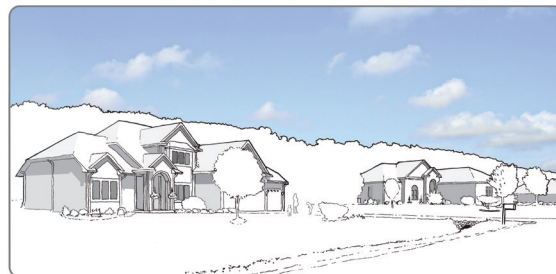
MEDIUM LOT NEIGHBORHOOD (showing lots of about 15,000 square feet)

Primarily single-family homes on 1/4- to 1/2-acre lots found at the edges of cities and villages



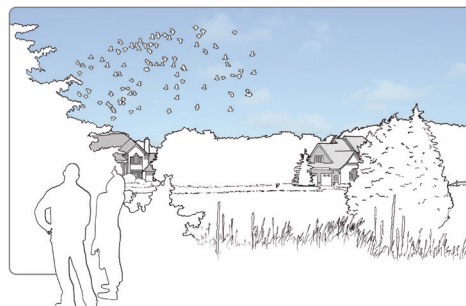
LARGE LOT NEIGHBORHOOD (showing lots of about 1/2 acre)

Primarily single-family homes on 1/2-acre to one-acre lots found at the edges of cities and villages and scattered outside cities and villages



LARGE LOT EXURBAN (showing lots of about 1.5 acres)

Single-family homes at an overall density of one home per 1.5 to five acres scattered outside cities and villages



RURAL ESTATE (showing a cluster subdivision with one-acre lots)

Single-family homes at an overall density of one home per five acres scattered outside cities and villages